

pGINA

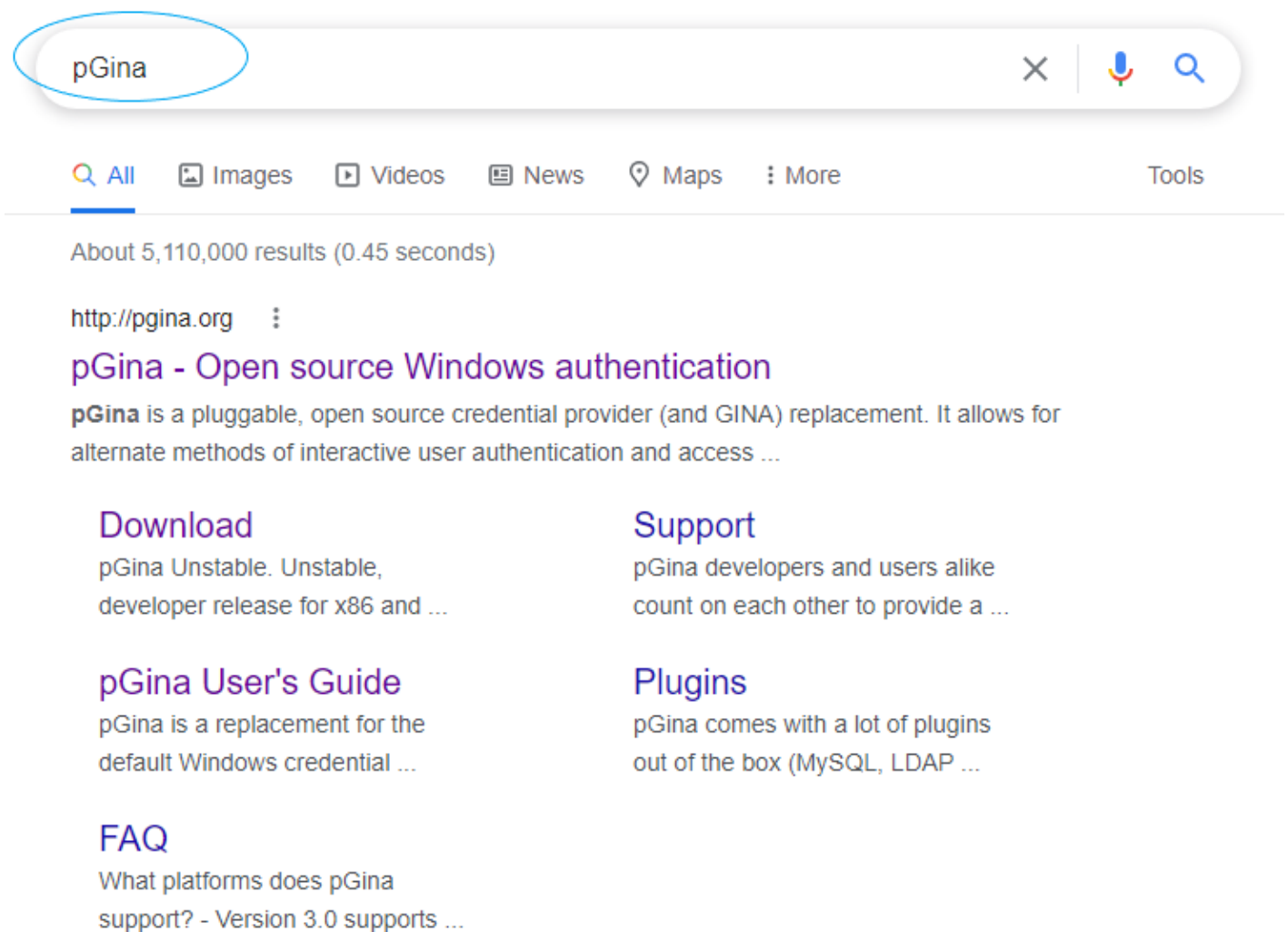
pGina is a pluggable, open-source credential provider (and GINA) replacement. It allows for alternate methods of interactive user authentication and access management on machines running the Windows operating system.

- [HOW TO DOWNLOAD AND INSTALL pGINA](#)
- [pGINA CONFIGURATION](#)

HOW TO DOWNLOAD AND INSTALL pGina

Step 1: Go to any available browser on your system.

Step 2: Type pGina.



Step 3: Then click download.

pGina



All

Images

Videos

News

Maps

More

Tools

About 5,110,000 results (0.45 seconds)

<http://pgina.org>

pGina - Open source Windows authentication

pGina is a pluggable, open source credential provider (and GINA) replacement. It allows for alternate methods of interactive user authentication and access ...

Download

pGina Unstable. Unstable, developer release for x86 and ...

Support

pGina developers and users alike count on each other to provide a ...

pGina User's Guide

pGina is a replacement for the default Windows credential ...

Plugins

pGina comes with a lot of plugins out of the box (MySQL, LDAP ...

FAQ

What platforms does pGina support? - Version 3.0 supports ...

Step 4: Select pGina Stable.

pGina

Download

Documentation

About

Download pGina

pGina stable and development releases

pGina Stable

Stable release for x86 and x64 Windows. Supports Windows XP SP3 and up.

pGina 3.1.8.0

pGina Unstable

Unstable, developer release for x86 and x64 Windows. New features are being added on a regular basis. Supports Windows XP SP3 and up.

pGina 3.2.4.0




Older versions

Old versions of pGina are no longer supported by the pGina team.

- [pGina 3.0.13.1](#)
- 2.x and below are available via [Sourceforge](#)

Step 5: Select the pGina Setup.




pGina 3.1.8.0 Latest

 daw42 released this Jul 07, 2013 · [69 commits](#) to master since this release  v3.1.8.0  9e52bf0

The first stable release for the 3.1 series.

- Support for the CredUI scenario. ([#195](#))
- Option to make pGina the default tile. ([#182](#))
- Service is now dependent on RPC, improves startup time.
- Improve resize behavior of configuration. ([#188](#))
- Various bug fixes ([#146](#), [#187](#), [#177](#))

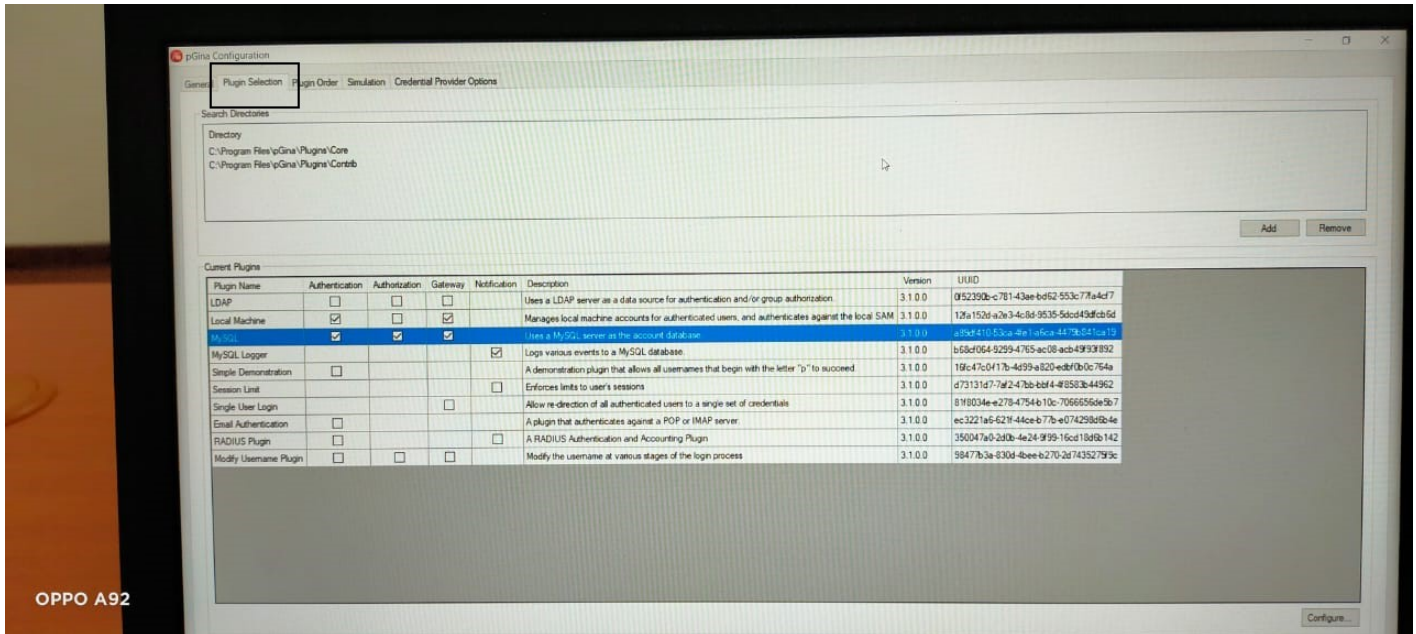
▼ Assets 3

 pGinaSetup-3.1.8.0.exe	1.37 MB
 Source code (zip)	
 Source code (tar.gz)	

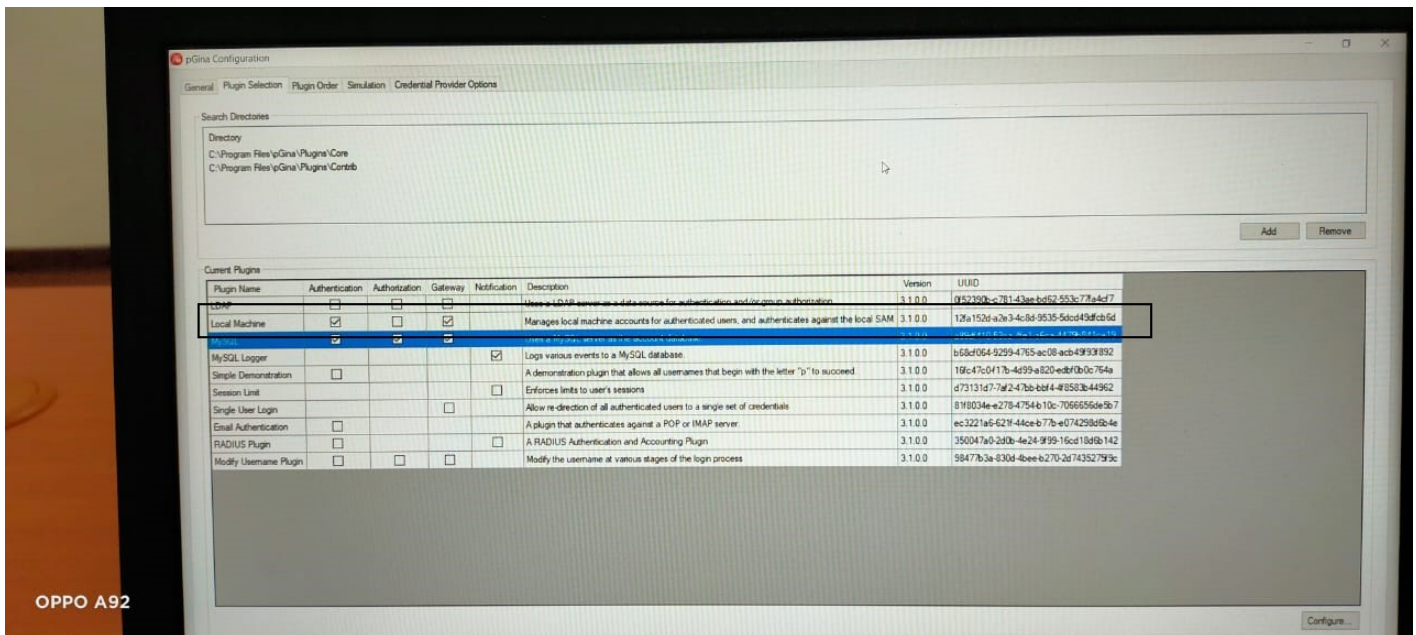
Step 6: Once downloading done, double click it to install. Note: Just follow installation instructions.

pGINA CONFIGURATION

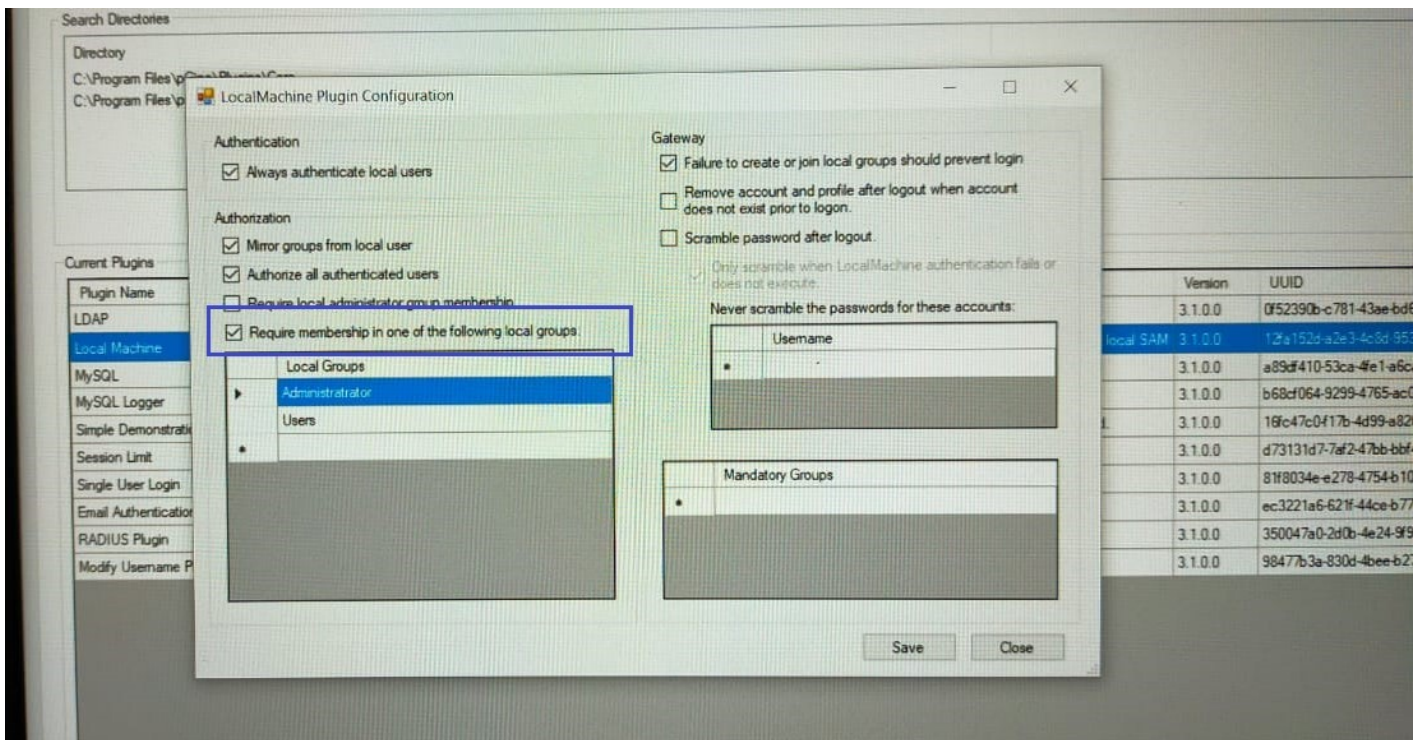
Step 1: Open pGina, select Plugin Selection tab.



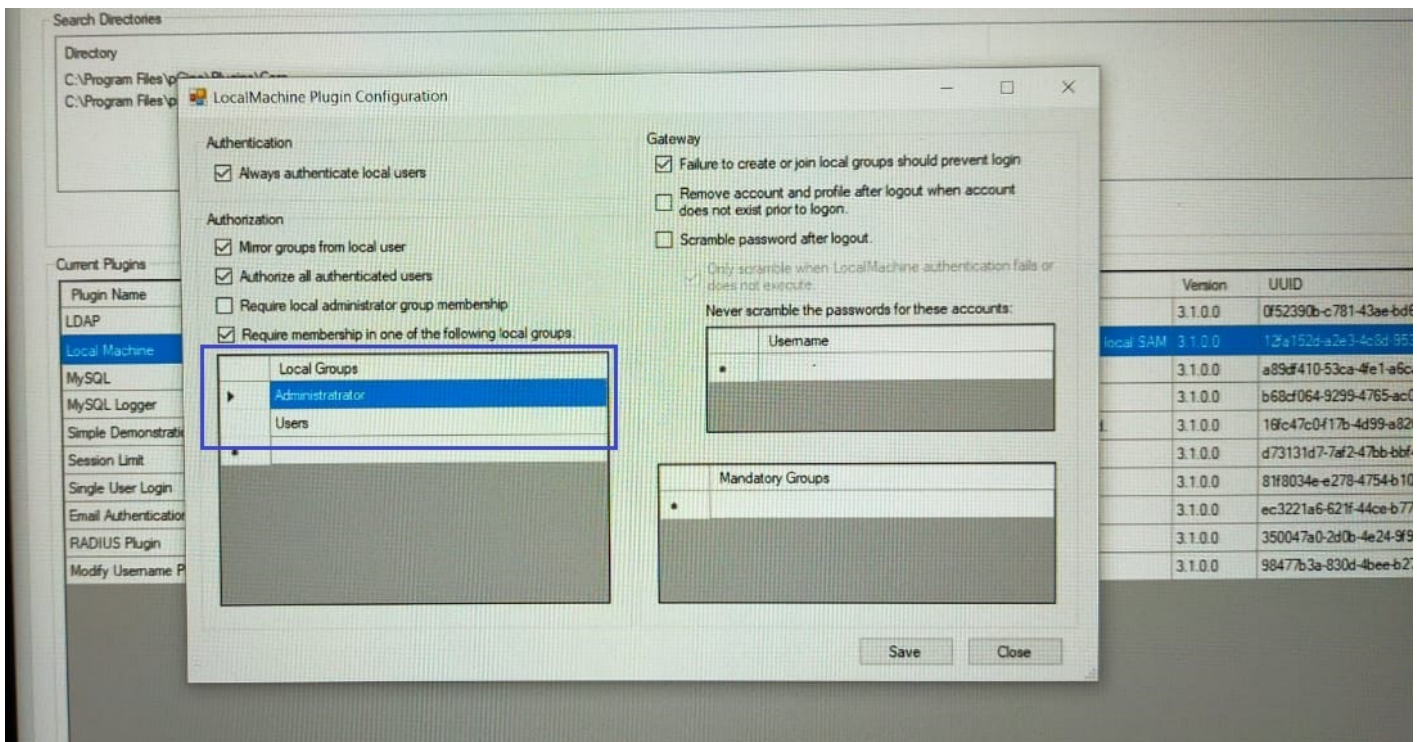
Step 2: In Plugin Selection Tab, Double click Local Machine or Select local machine and click configure button below.



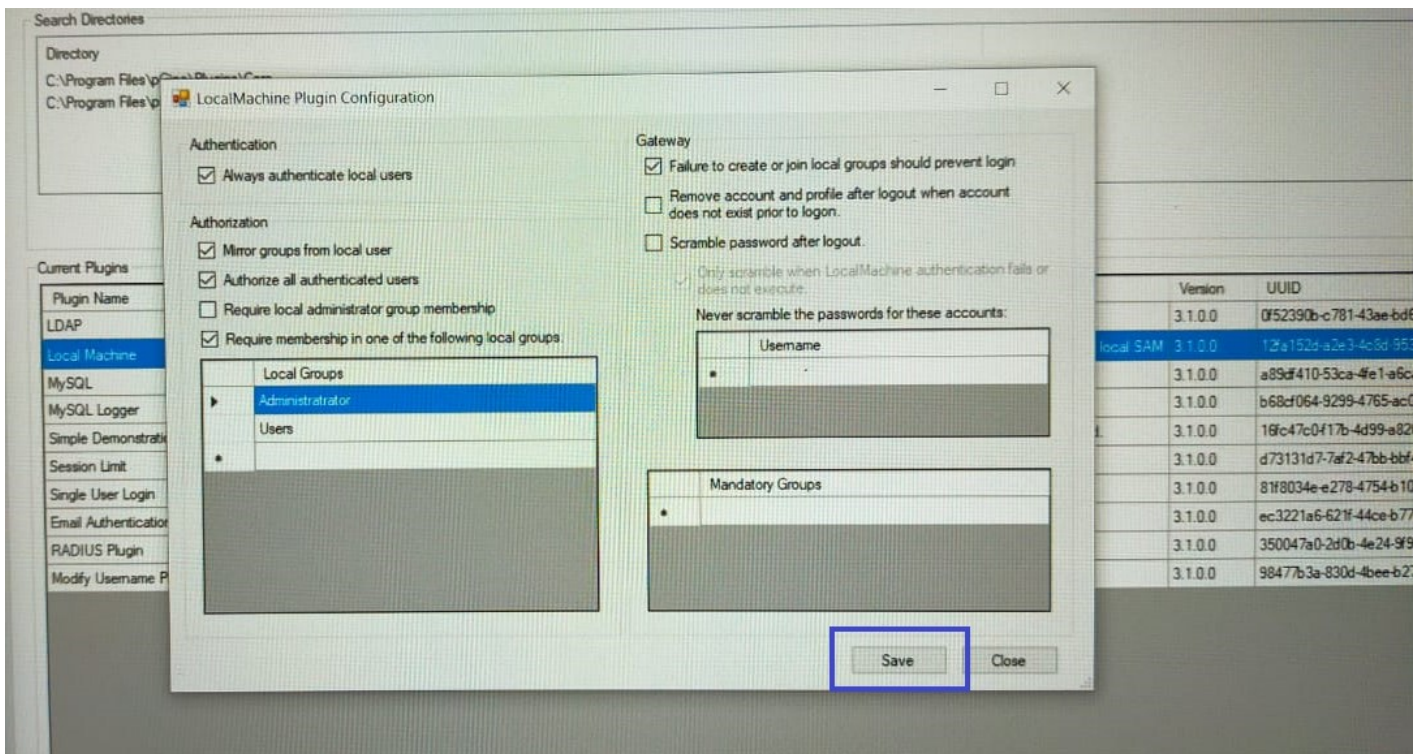
Step 3: Put check on "Require membership in one of the following local groups".



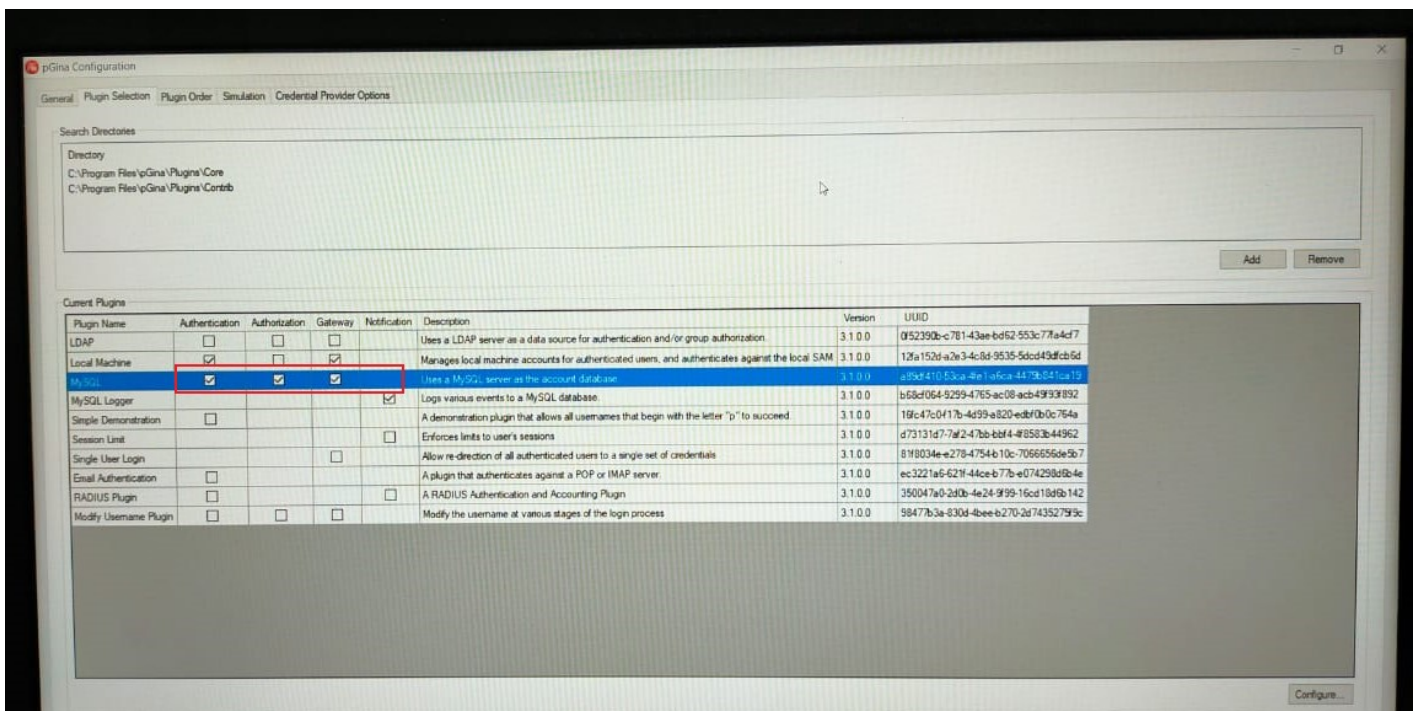
Step 4: Add Administrator and Users on Local Groups.



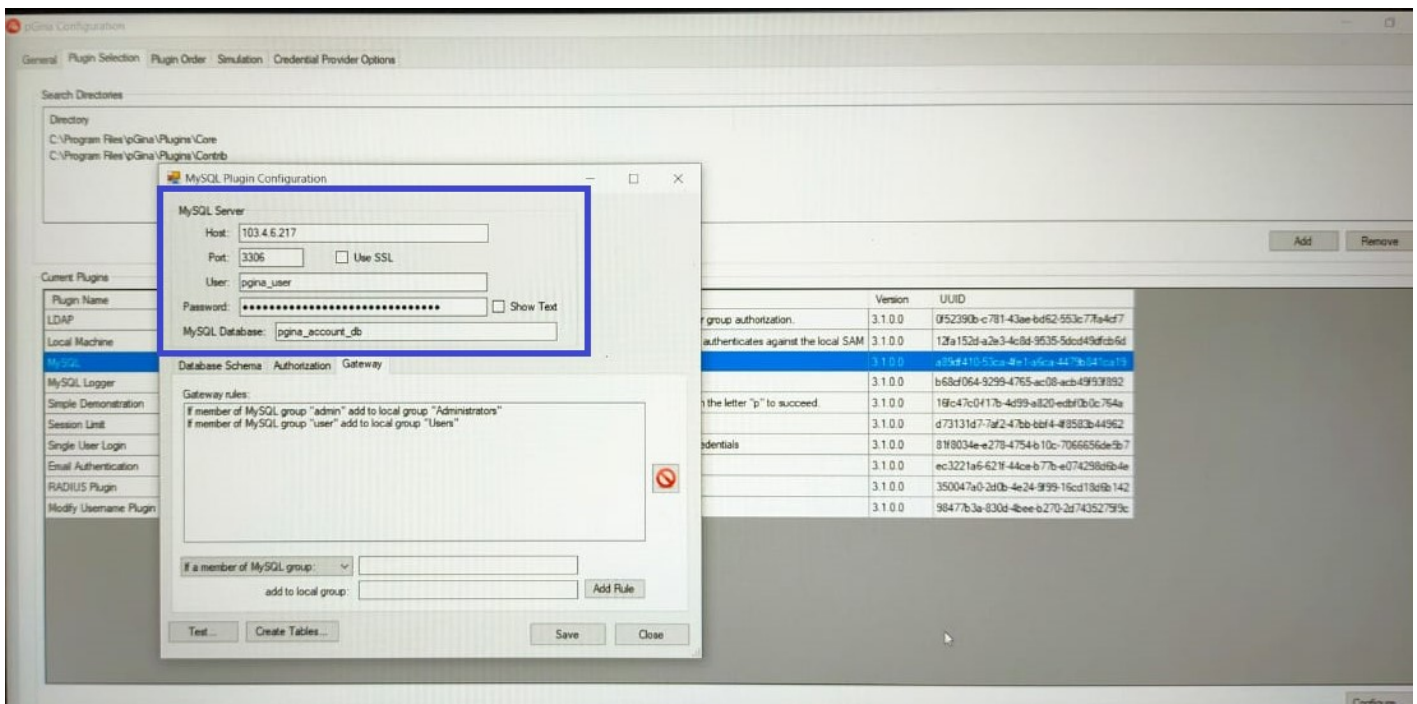
Step 5: Click Save Button.



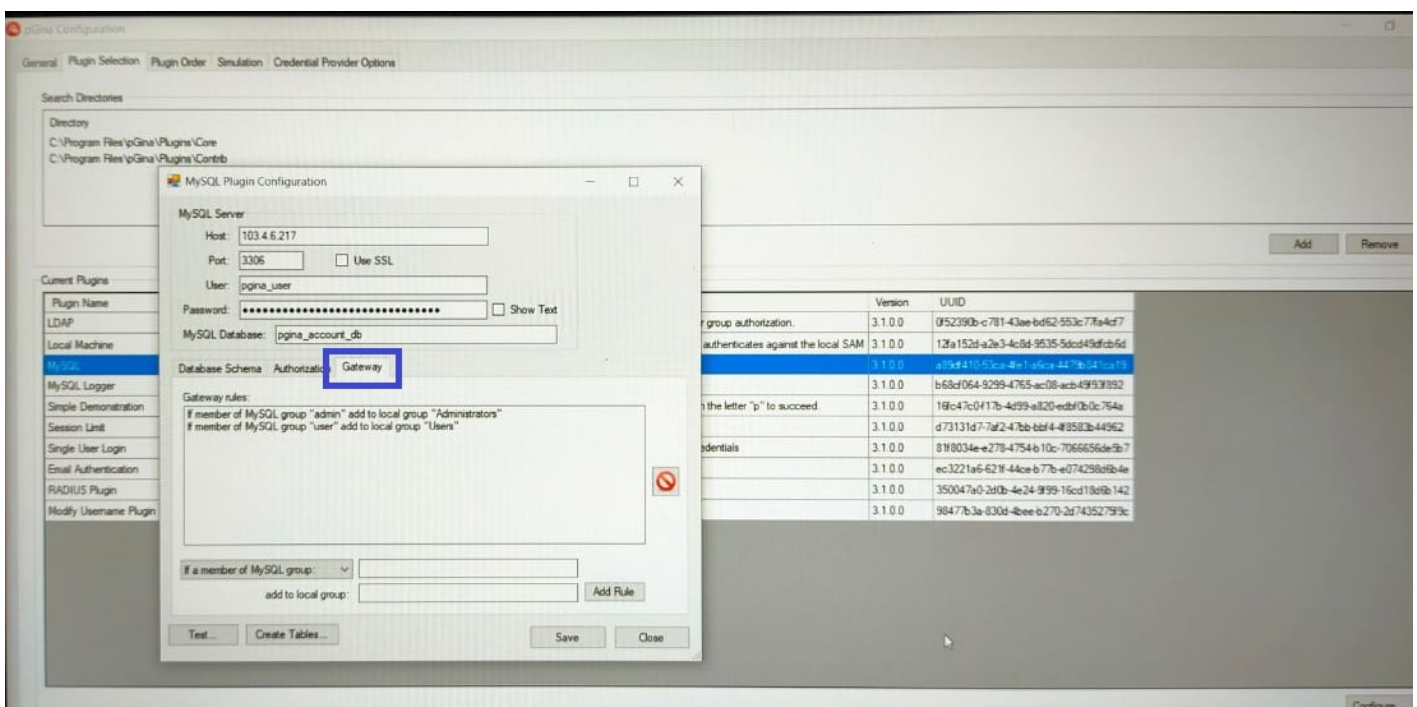
Step 6: Put check on MySQL Authentication, Authorization and Gateway.



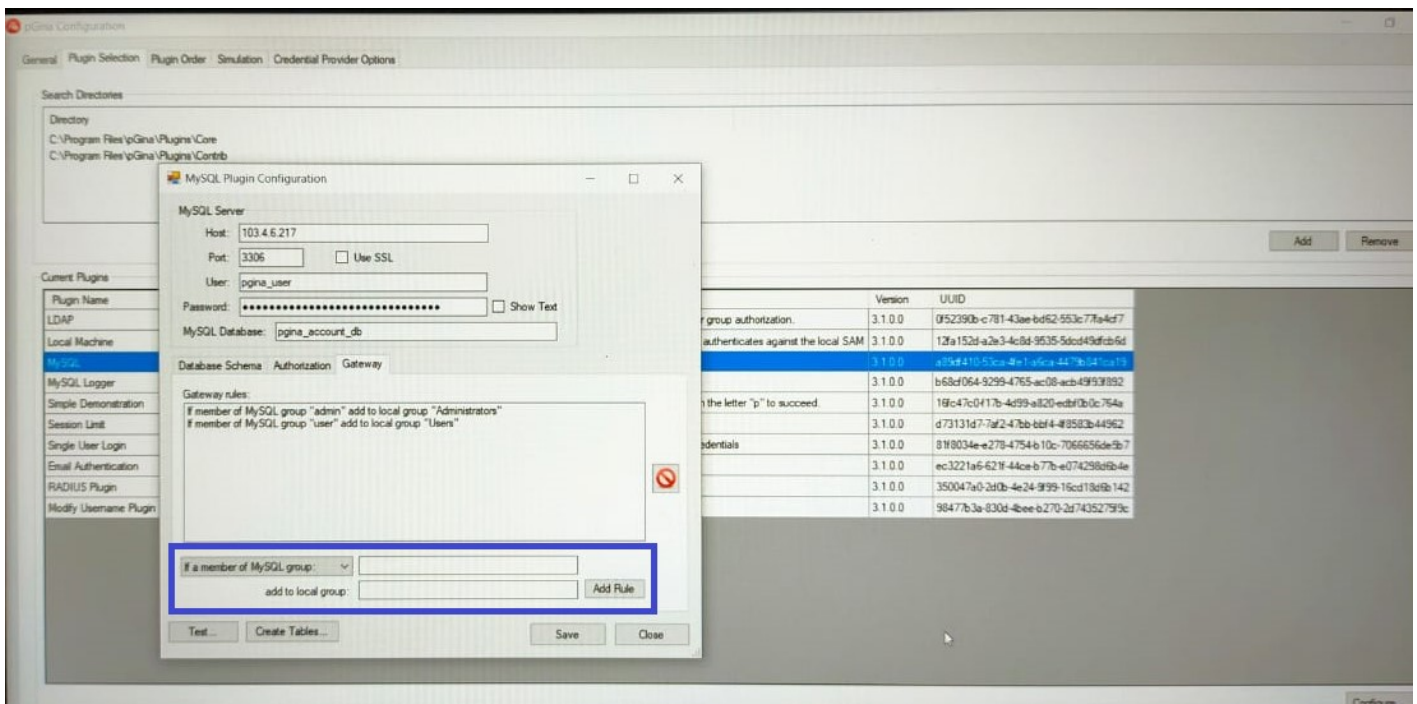
Step 7: Double click MYSQL or Select MySQL and click configure button below to configure it. Put the host, port, user name, password and MySQL database name.



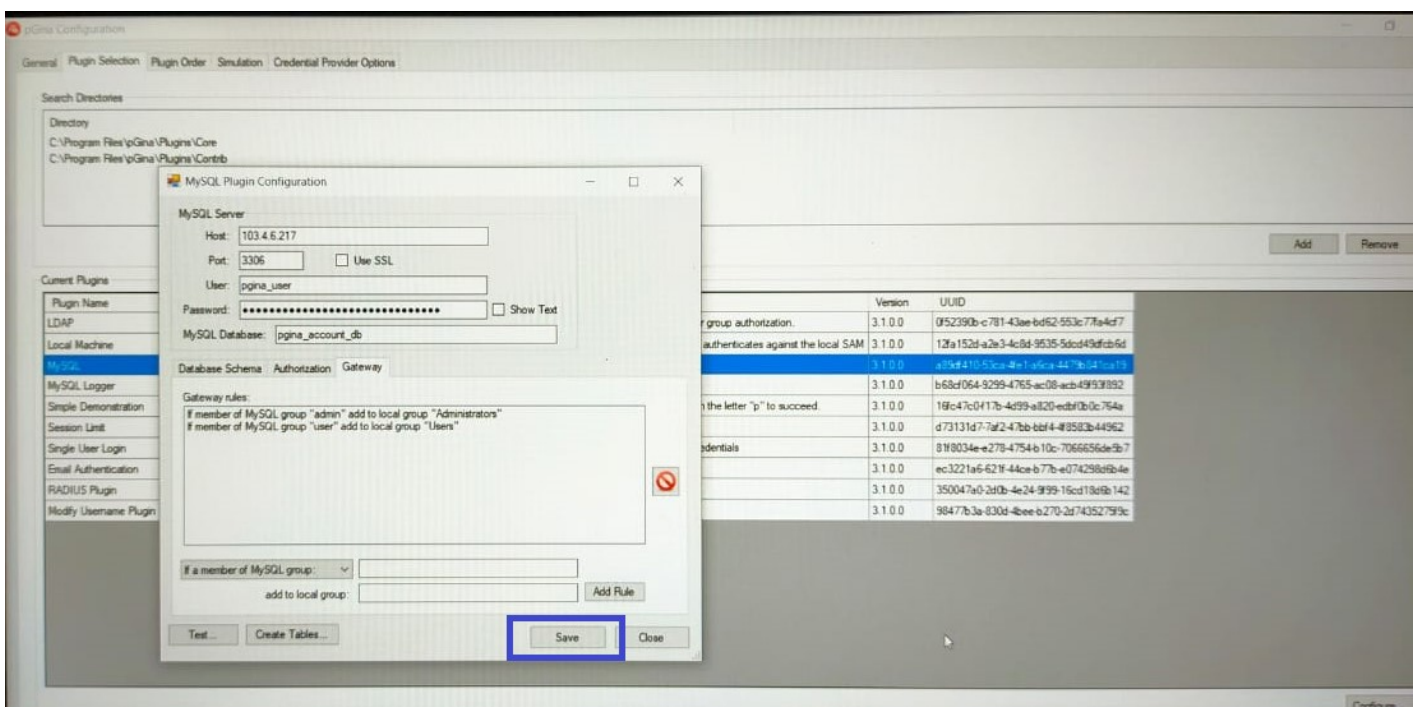
Step 8: Select Gateway Tab.



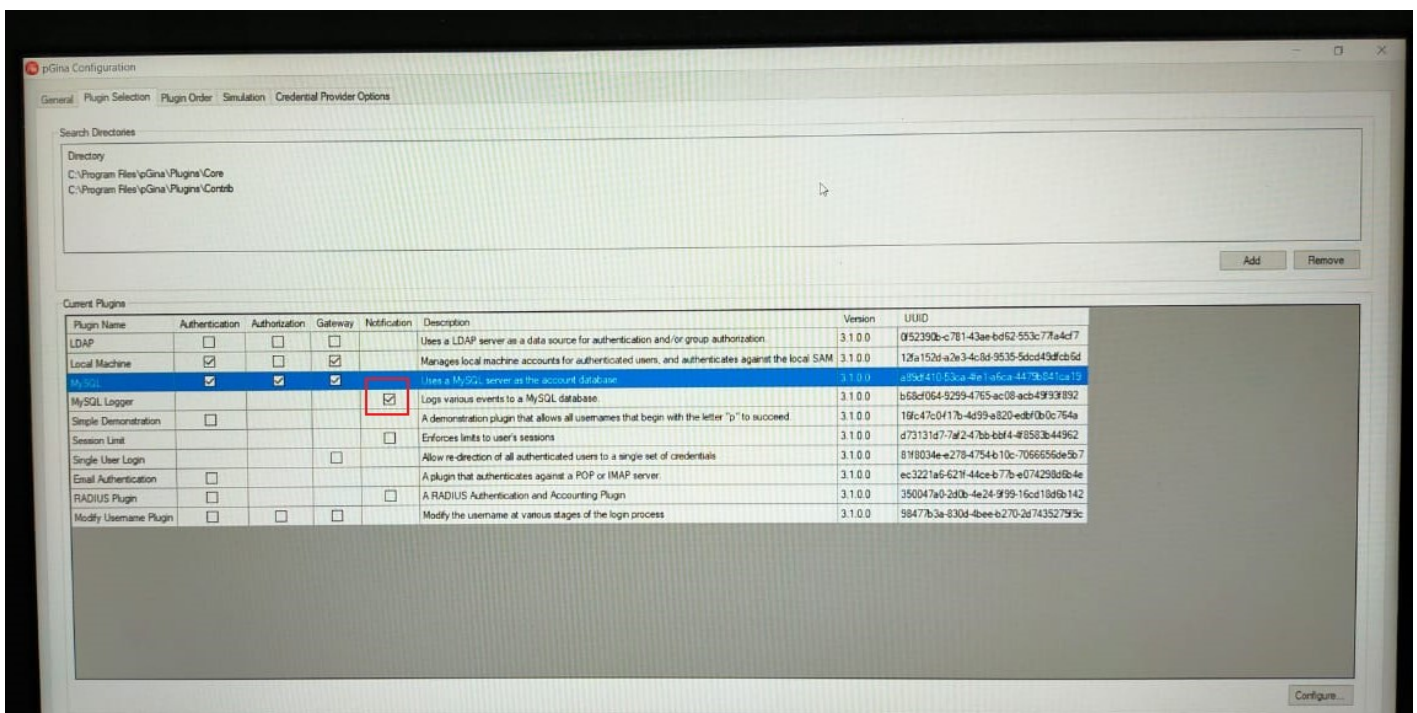
Step 9: Add Gateway Rule. If a member of MySQL group "admin" add to local group "Administrators" and If a member of MySQL group "user" add to local group "Users". Then click add rule button.



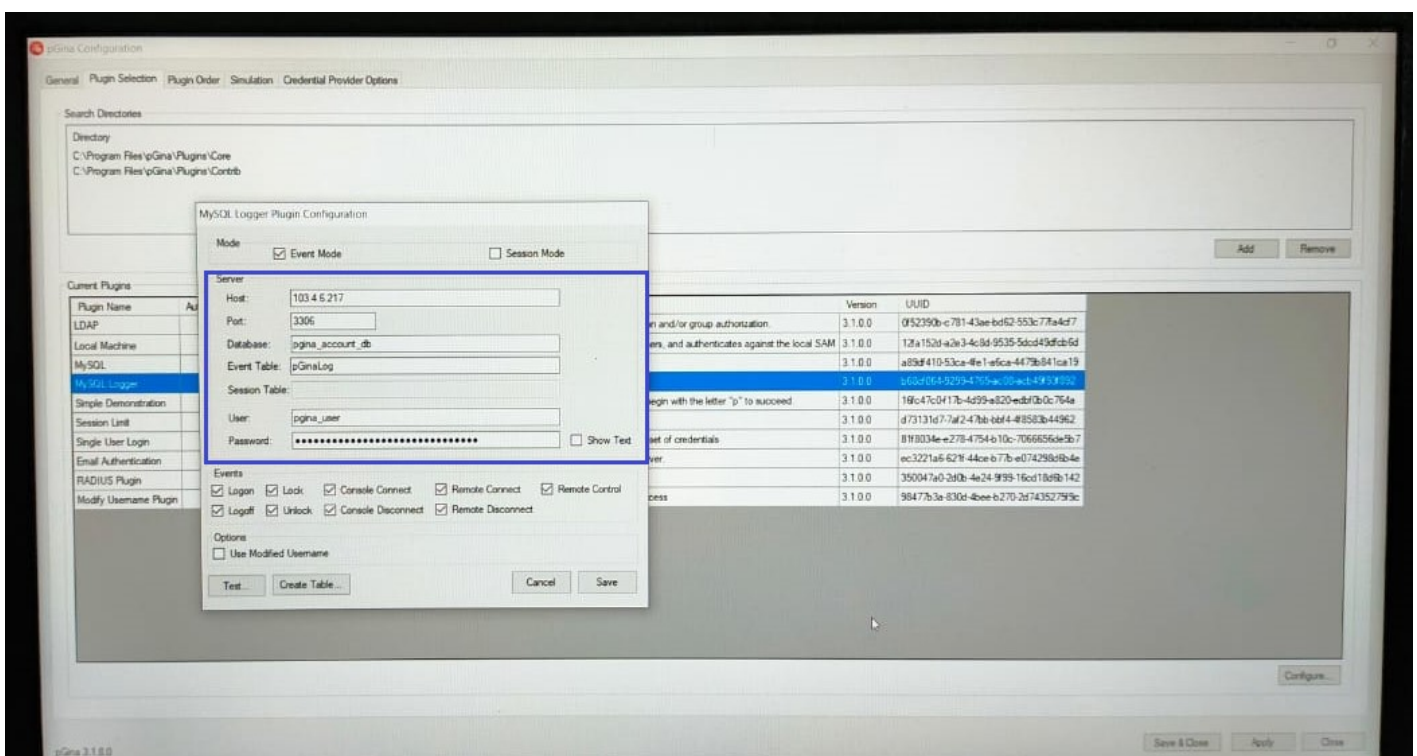
Step 10: Click save button.



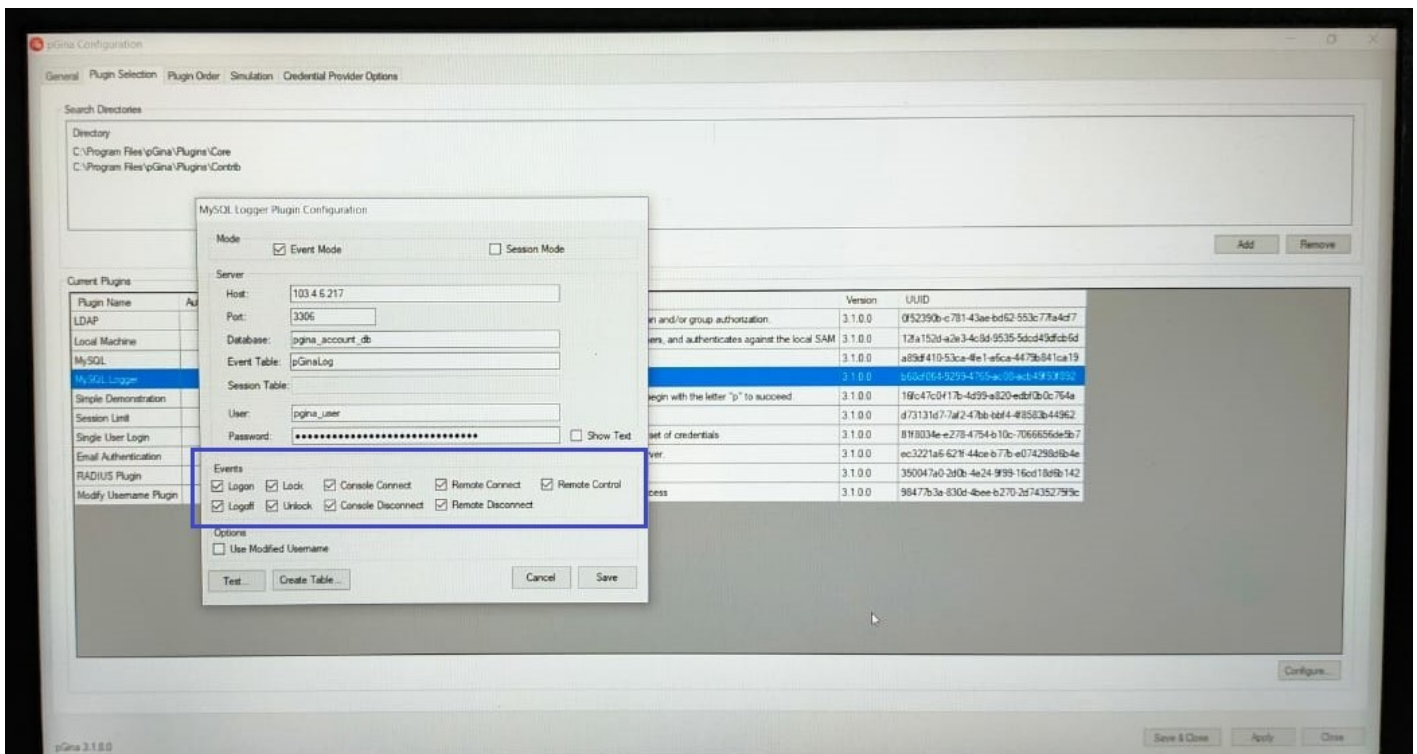
Step 11: Put check on MySQL Logger Notification.



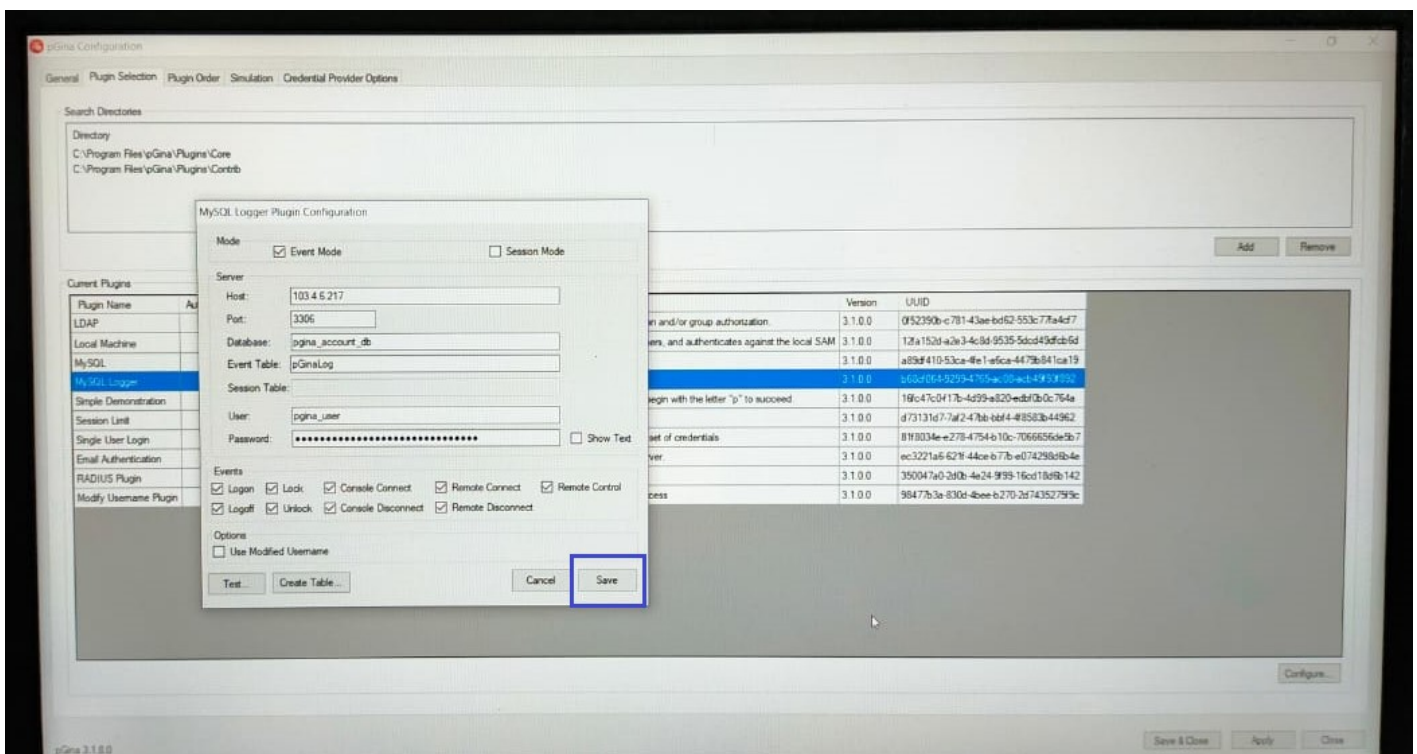
Step 12: Double click MySQL Logger or Select MySQL Logger and click configure button below to configure it. Put the host, port, user name, password and MySQL database name.



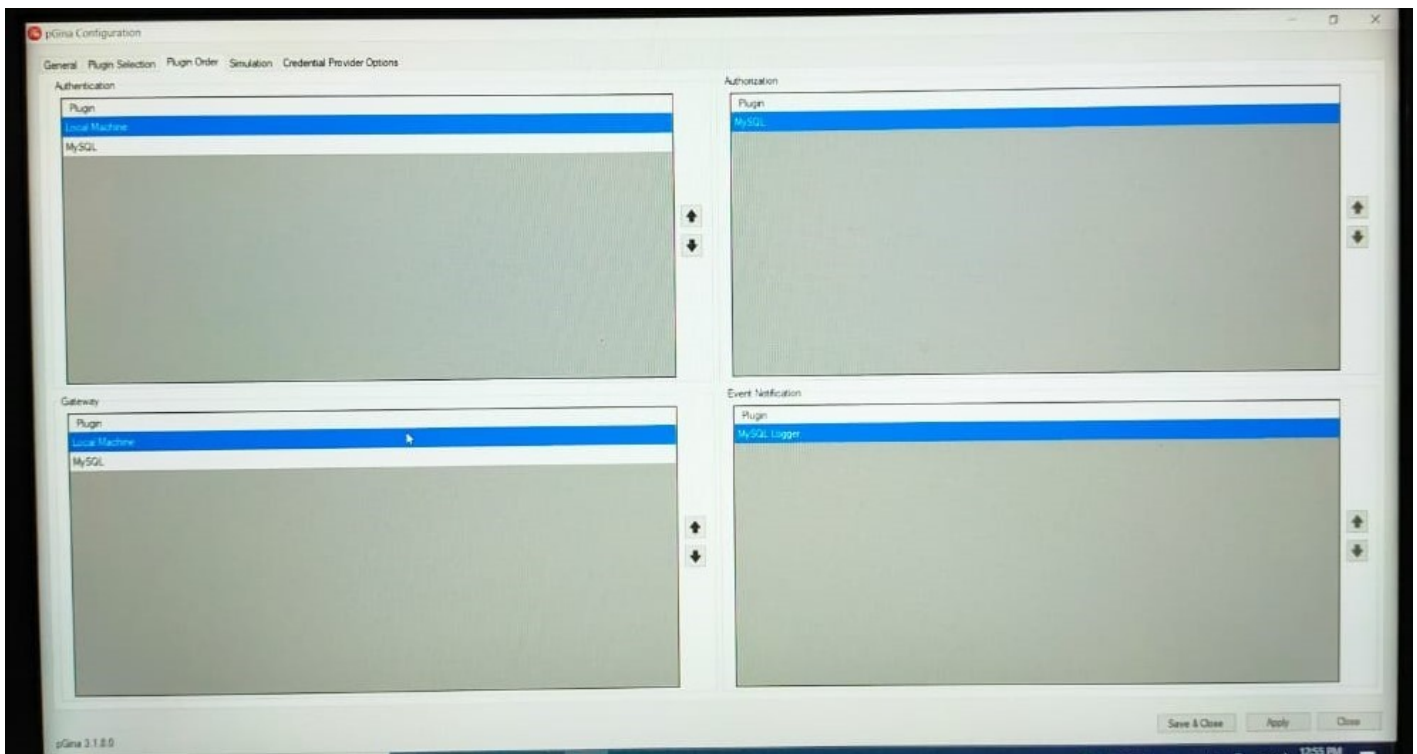
Step 13: Put check all events.



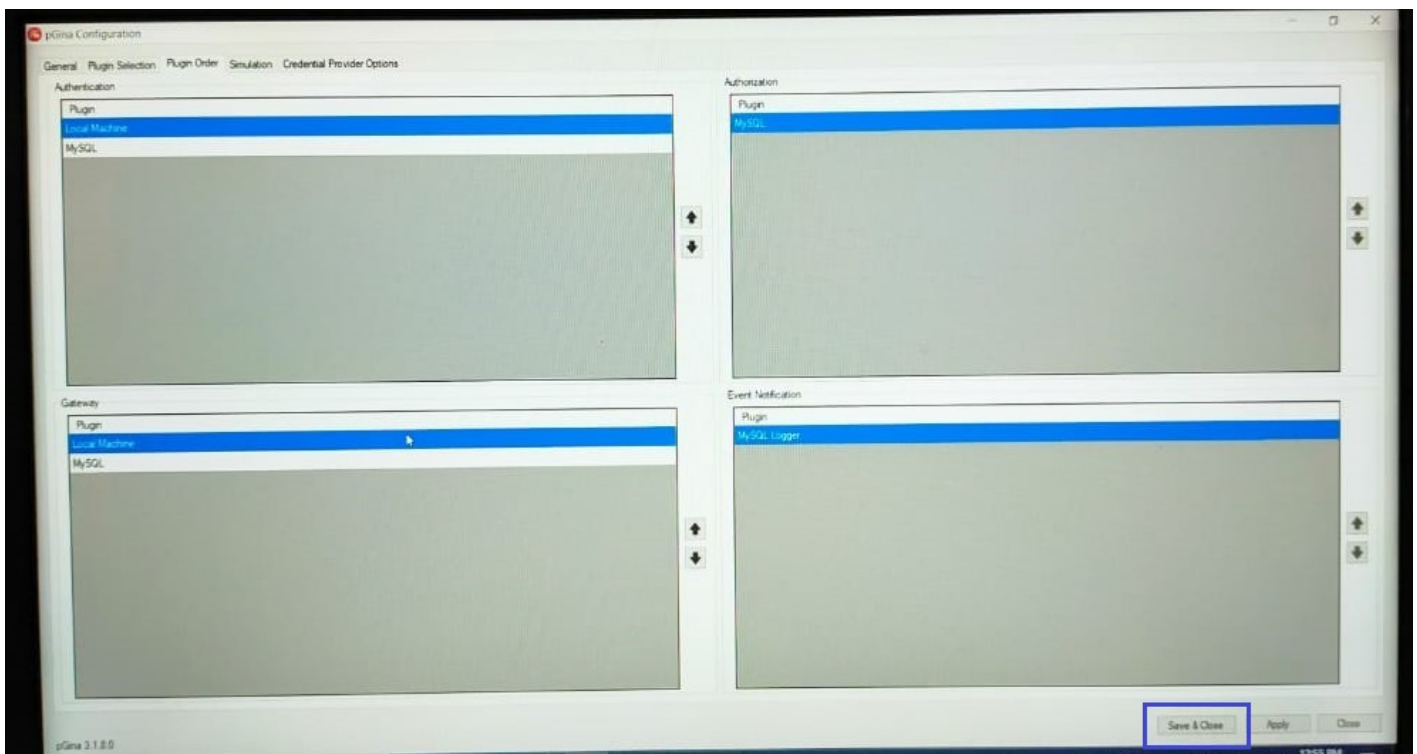
Step 14: Click Save Button



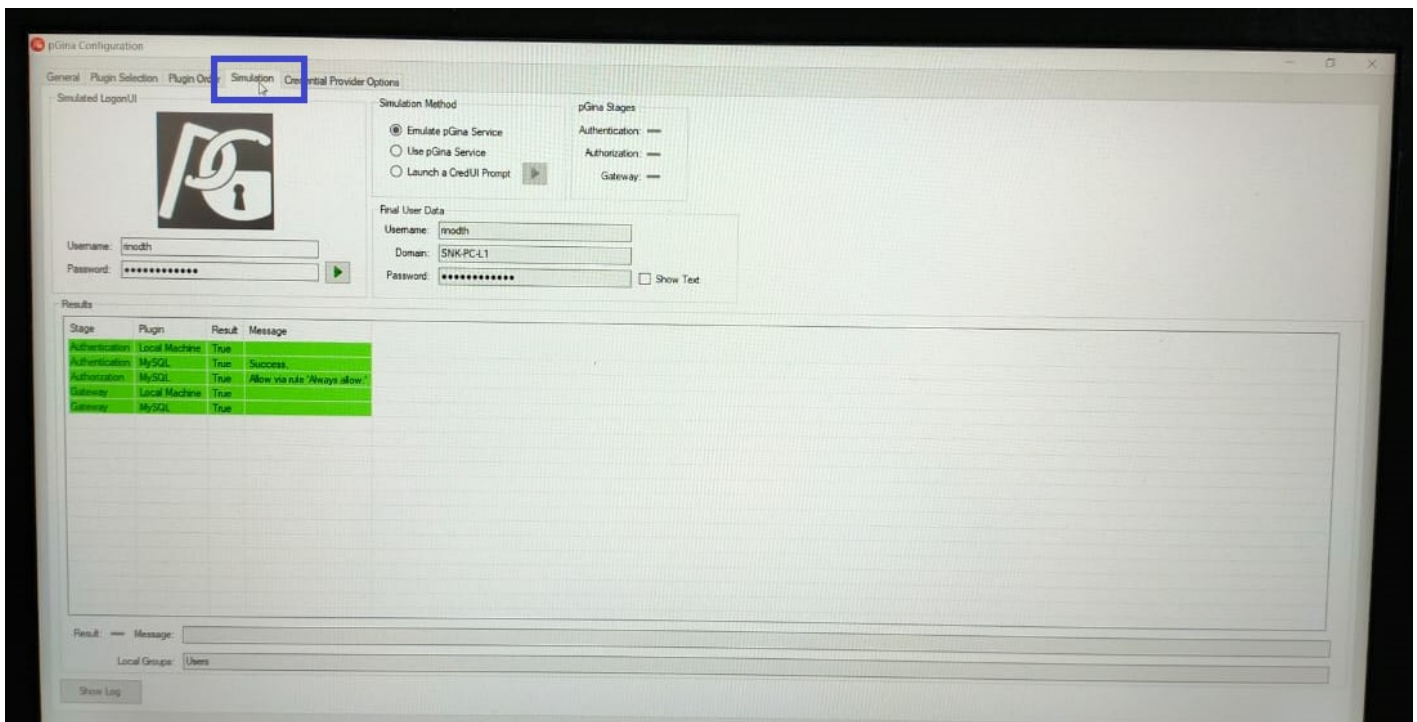
Step 15: Select Plugin Order Tab. Make sure setting on authentication is local machine and authorization is MySQL.



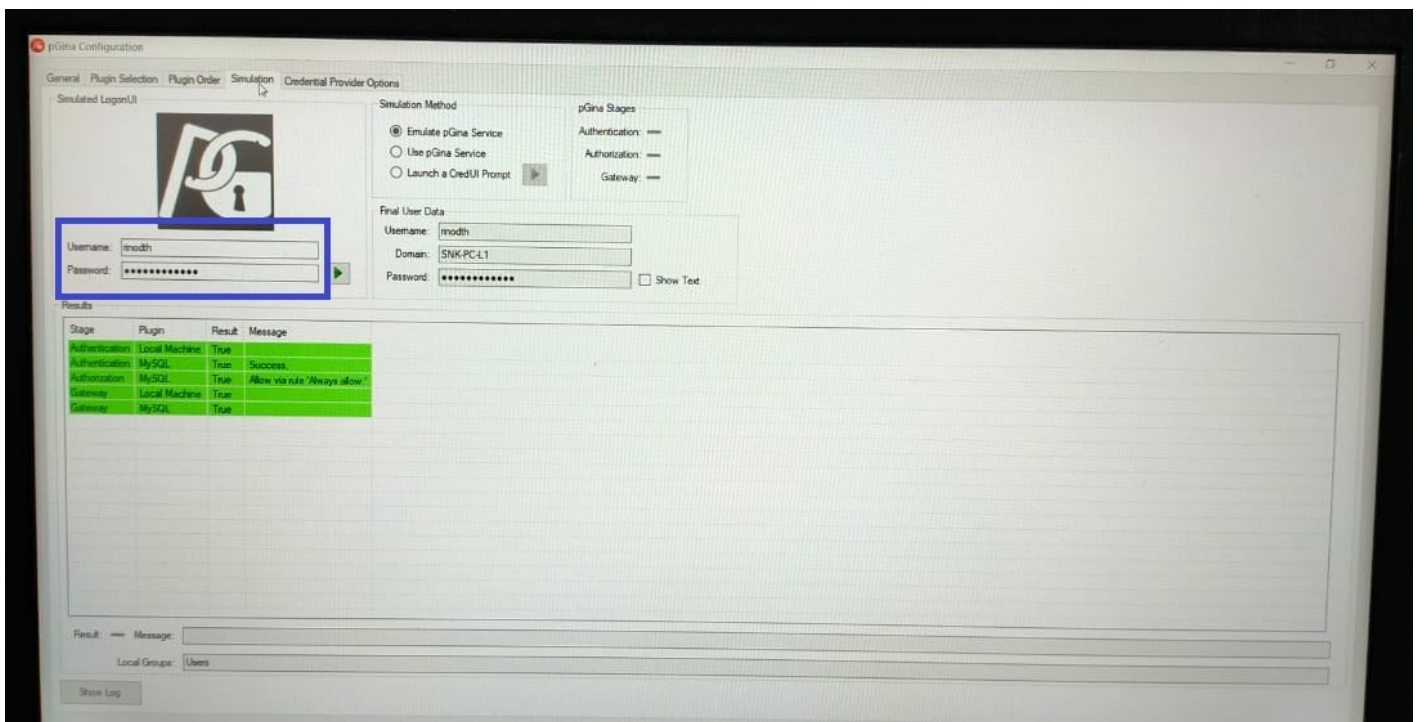
Step 16: Click Save & Close Button.



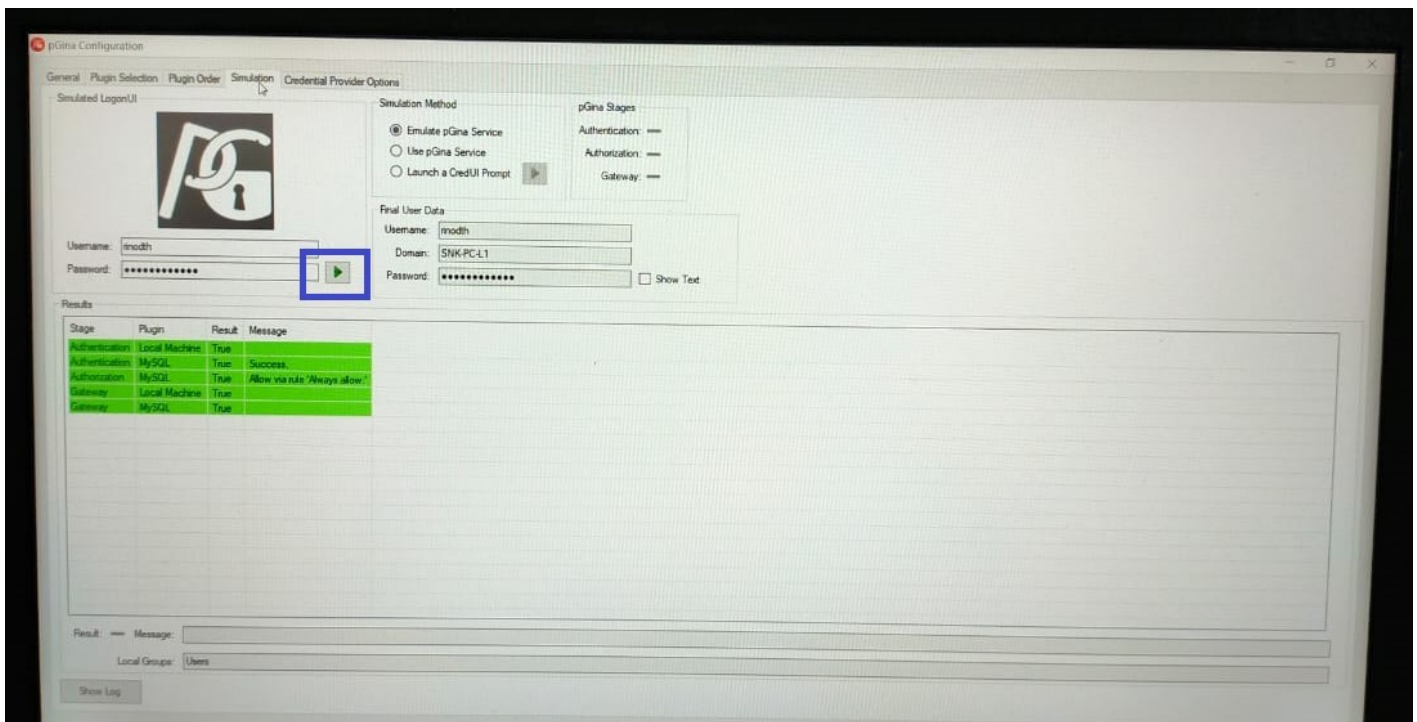
Step 17: Select Simulation Tab.



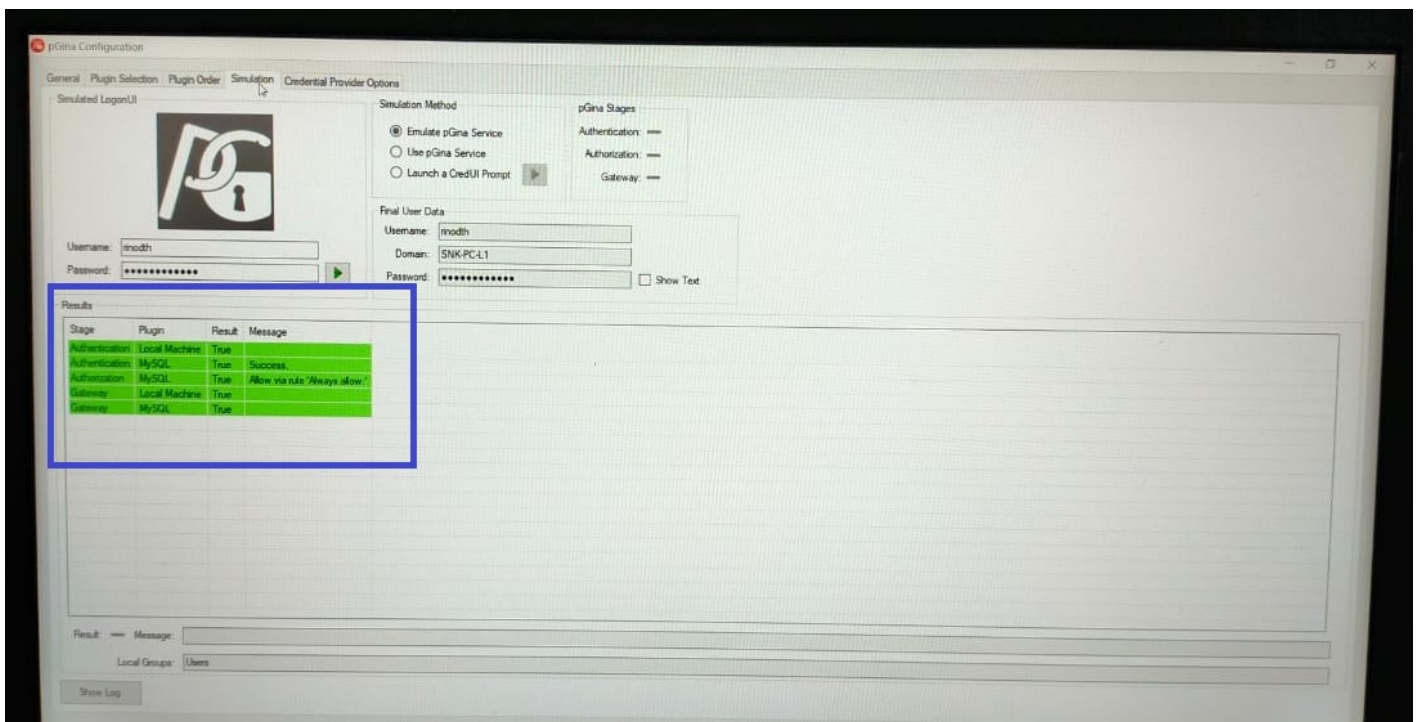
Step 18: Type user name and password that create on Md5.



Step 19: Then click play button to simulate it.



Result appears below:



Note: If result true it means working.

